

# Universal Receiver

## Programming Guide

### Technical Features

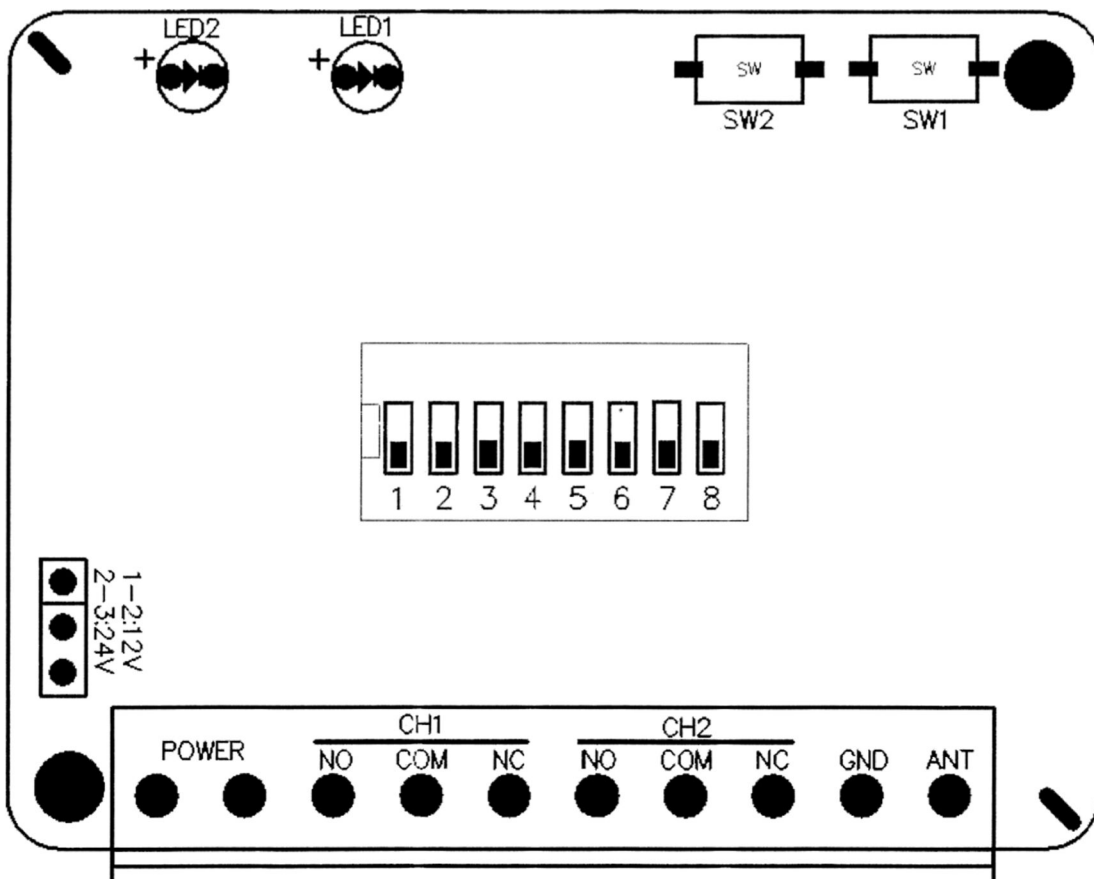
A Power input allows the user to choose the input voltage by changing the jump pin (AC/DC 12V/24V). Depending on the remote used, the memory of the receiver allows up to 25 remotes to be programmed. Dual channels allows up to two different objects to be connected, using individual learn buttons for ease of programming.

### Remote Coding Method

1. Arrange the dipswitches to match required brand (see settings on following pages)
2. Press the SW button on the channel you are coding a remote to. The LED will turn on.
3. Press the desired button on the remote control. the LED will flash 4 times when successfully coded in.
4. Repeat steps 2-3 for additional remote controls

### Clearing All Remotes From The Receiver

1. Press and hold the desired SW button for the channel you wish to clear and the LED will begin to flash
2. Once the LED turns off, all remote controls will be cleared from the receiver channel



# Universal Receiver

## Programming Guide

---

1



ATA PTX4, Aprimatic, BFT Mitto, DEAA, Doorhan, Herculift, Superlift / Avanti, Steel Line SD800, Centurian Euro Red / Blue

2



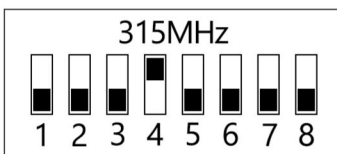
ATA PTX5, B&D TriTran

3



Merlin Security+ (C945)

4



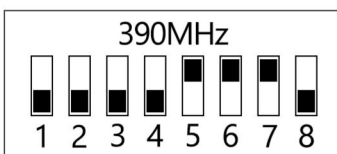
Gliderol TM305c

5



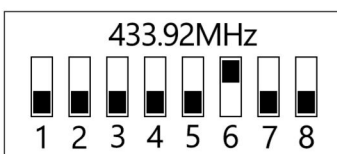
Ditec (Fixed Code)

6



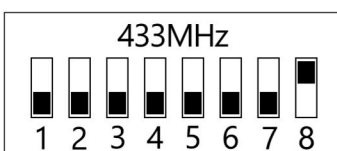
Ditec (Fixed Code)

7



Ditec, CAME (Rolling / Some Fixed Code)

8



NICE Flor-S, Nice Era Inti (Genuine Only - Some aftermarkets do not work)

# Universal Receiver Programming Guide

---

9	<div style="border: 1px solid black; padding: 5px; margin-bottom: 5px;">433.92MHz</div>	Marantec
10	<div style="border: 1px solid black; padding: 5px; margin-bottom: 5px;">868MHz</div>	Marantec, Hormann, Berner, 4D Doors*
11	<div style="border: 1px solid black; padding: 5px; margin-bottom: 5px;">868.35MHz</div>	Marantec
12	<div style="border: 1px solid black; padding: 5px; margin-bottom: 5px;">433.92MHz</div>	FAAC SLH Rolling Code
13	<div style="border: 1px solid black; padding: 5px; margin-bottom: 5px;">868.80MHz</div>	FAAC (Genuine Only)
14	<div style="border: 1px solid black; padding: 5px; margin-bottom: 5px;">300MHz</div>	Universal Fixed Code*
15	<div style="border: 1px solid black; padding: 5px; margin-bottom: 5px;">318MHz</div>	Universal Fixed Code*
16	<div style="border: 1px solid black; padding: 5px; margin-bottom: 5px;">330MHz</div>	Universal Fixed Code*